



White Paper

# Practice medicine your way

A value equation that solves modern-day primary care challenges

# Our commitment to *you*

Healthy helps providers practice medicine the way they always wanted by providing the support and financials to be successful in a proactive primary care practice. With us, providers boost revenue and optimize their time through reimbursement based on outcomes, not volume, enabling providers to provide exceptional care and enjoy a thriving work-life balance.

Our mission is to revolutionize healthcare by empowering doctors to devote more time and attention to their patients, ensuring that each individual receives the comprehensive care they deserve. We are committed to developing innovative solutions that streamline administrative tasks and promote efficient medical practices, ultimately fostering a nurturing environment for optimal patient well-being and satisfaction.

“

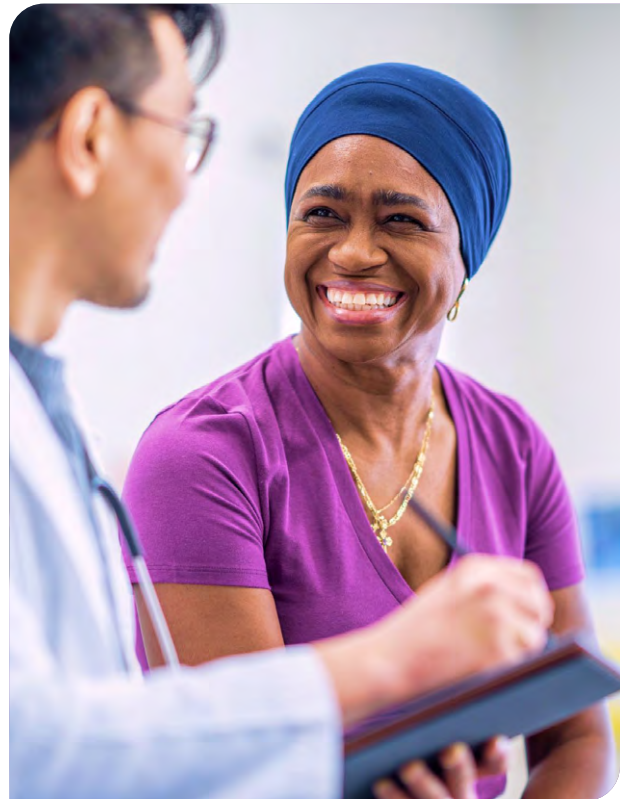
Together, we strive to  
build a brighter,  
healthier future for all.”



# Transforming your practice begins here

The current model in the United States is not sustainable. It also doesn't empower most physicians to do what they got into medicine for —to help people live healthy lives and provide quality care. Outdated business systems, resources and processes compound healthcare delivery issues, resulting in frustrated physicians and patients with preventable, chronic diseases.

To solve this, Healthly provides a modern approach through a new equation that connects provider compensation to quality outcomes, inspiring greater opportunities to grow your practice through preventative care.



## Understanding Healthly's Model of Value-Based Care



= Our value to you

# Definitions and how we help



## Growth

In addition to more capitation to your practice on a per-member basis, additional membership helps spread the inevitable risk of necessary spend over as many patients as possible.

- **10+ health plans** so your patients have the ultimate choice in benefits
- **Custom-tailored specialty networks** so patients can see who they need/ want to
- **Marketing support** including community events, marketing materials, and broker subsidies
- With Lifestyle Medicine, a **differentiated clinical model to advertise** (we cover the costs of the board certification)



## Benchmark

Defined by Medicare based on the average fee for service spend for a county.

- With Healthy's Restricted Knox-Keene license, we receive the full net premium for Medicare Advantage patients from our health plan partners **which maximizes the dollars available for you to spend on your patients**
- Our unique shared savings model gives you a **profit share** for keeping your patients healthy



## Risk Adjustment Factor

Using the Hierarchical Condition Categories (HCC), Medicare reimburses more for patients that are demonstrated to be more ill, putting more money into what can be spent on your attributed patients to ensure they receive the care they need.

- **Pre-visit chart review** and diagnosis suspecting to help comb through the mountain of chart notes
- **Post-visit chart review** to help ensure diagnoses are documented in a way to correctly illustrate to Medicare the risk
- **An assigned coding resource** to answer your questions
- **Integration** with your Electronic Health Record (EHR), or we will give you an EHR



## Quality

Healthy provides additional reimbursement for closing quality gaps as it reflects to health plans the quality of our primary care physicians, leading to greater patient assignments and relevancy.

- **Cozeva to link directly** into the health plan's quality measurement system
- **Care Navigators to assist** in contacting patients with open quality gap
- **Home Medication delivery**, through our pharmacy partner, to help patients get their medications



## Spend

Claims spend is **broken into three categories: proactive, unavoidable, and avoidable.** Patients will need care; however, sometimes it is expensive care. By eliminating avoidable spend and using proactive care to minimize unavoidable spend, more profits are available to share to increase further preventative care.

### Unavoidable Spend

- **Complex care** physicians to help coordinate your toughest patients, backstopping you while you're focused on seeing patients
- **Specialty partnerships** to help ensure patients get to the right forum for their care

### Avoidable Spend

- **Complete transparency** into the revenue and claims received for your patients, letting you know exactly how your patient's healthcare dollars are being spent
- **Open benchmarking** against your peers and Healthy's staff model clinics

## Proactive Care

- **Connection System** which runs in the background to help identify patients who may be falling through the cracks
- **Care Navigators** to help ensure patients with rising risk get in before their
- **Lifestyle Medicine** interventions, including sponsorship for your board certification
- **Classes** for diet, exercise, stress management, and community
- **Social** workers to assist your patients in getting benefits and support
- **Transportation** to help your patients get in who cannot drive





# Take the next step with Healthy

Your partner in improving patient health outcomes by meeting the growing demand for high-quality, personalized proactive care.

**Contact:**

Erica Badran

[Erica.Badran@healthlymedical.com](mailto:Erica.Badran@healthlymedical.com)

(310) 560-3550